

Willach Pharmacy Solutions.

The right prescription for every pharmacy.

Willach is the market leader in Europe with regard to professional storage and dispensing equipment for medicines. With FAMA and CONSIS, Willach can provide system solutions for the conventional and fully automated storage of medicine packages: for any type of pharmacy, for any size of pharmacy. Willach undertakes all product development and production in Germany to assure the highest quality standards.



consis robotic dispensers

Consis robotic dispensers offer a tailor-made and highly efficient automation concept for your pharmacy. Whether you want to save time or gain space: Consis has the right solution for every situation.



FAMA drawer systems

Fama large-capacity and underbench drawers provide fast access to packages, with good visibility, excellent space utilisation and ergonomically perfect operation. No other system offers you drawers which can store more packages in the same space.



FAMA shelving systems

Fama worktop and fast mover shelves were developed as a modular system to achieve the greatest possible flexibility. They can be precisely adapted to your individual requirements. Fama round shelves store fast moving items to provide direct access and can be flexibly configured.



UK Sales Office:

Willach Pharmacy Solutions
Concorde House
Trinity Park, Solihull
Birmingham B37 7UQ
United Kingdom
Phone +44 (0) 1216 355 025
info.uk@willach.com
www.willach.com

German Head Office:

Gebr. Willach GmbH
Stein 2
53809 Ruppichteroth
Germany
Phone +49 (0) 2295 9208 0
Fax +49 (0) 2295 9208 499
info@willach.com
www.willach.com

Willach Group



Improving dispensing efficiency. With pharmacy drawers.



12/2010 Product descriptions, drawings and illustrations represent neither assured characteristics nor declarations of guarantee.



Willach | Pharmacy Solutions

The Inefficient Dispensary

FAMA

Disadvantages of traditional shelving

■ Space

Traditional low-density shelves are not space or volume efficient.

■ Time

Dispensing a prescription requires more time, going back and forth to the shelves.

■ Organisation

Inventory control and ordering takes more of your valuable time, which could be put to better use. Identifying products is more difficult because they are not clearly separated from each other.

■ Health & safety

Potential risk of incorrect product selection. Possible staff injury from falling stock and shelving, incorrect use of ladders and stools.

■ Inventory control

Cluttered traditional shelving has low visibility and can hinder stock management.



Efficient!

Inefficient!

The FAMA Dispensary

Advantages of FAMA drawers:

■ Space

2 FAMA bays are equivalent to 6 bays of traditional plinth shelving.

■ Time

Faster access to products due to more compact storage.

■ Organisation

Simple identification of products thanks to unique divider and labelling system, reducing risk of dispensing errors.

■ Health & safety

Product is kept dust free within wire mesh based drawers. Self-returning drawers and enclosed carriage step system reduce injury risk in the dispensary.

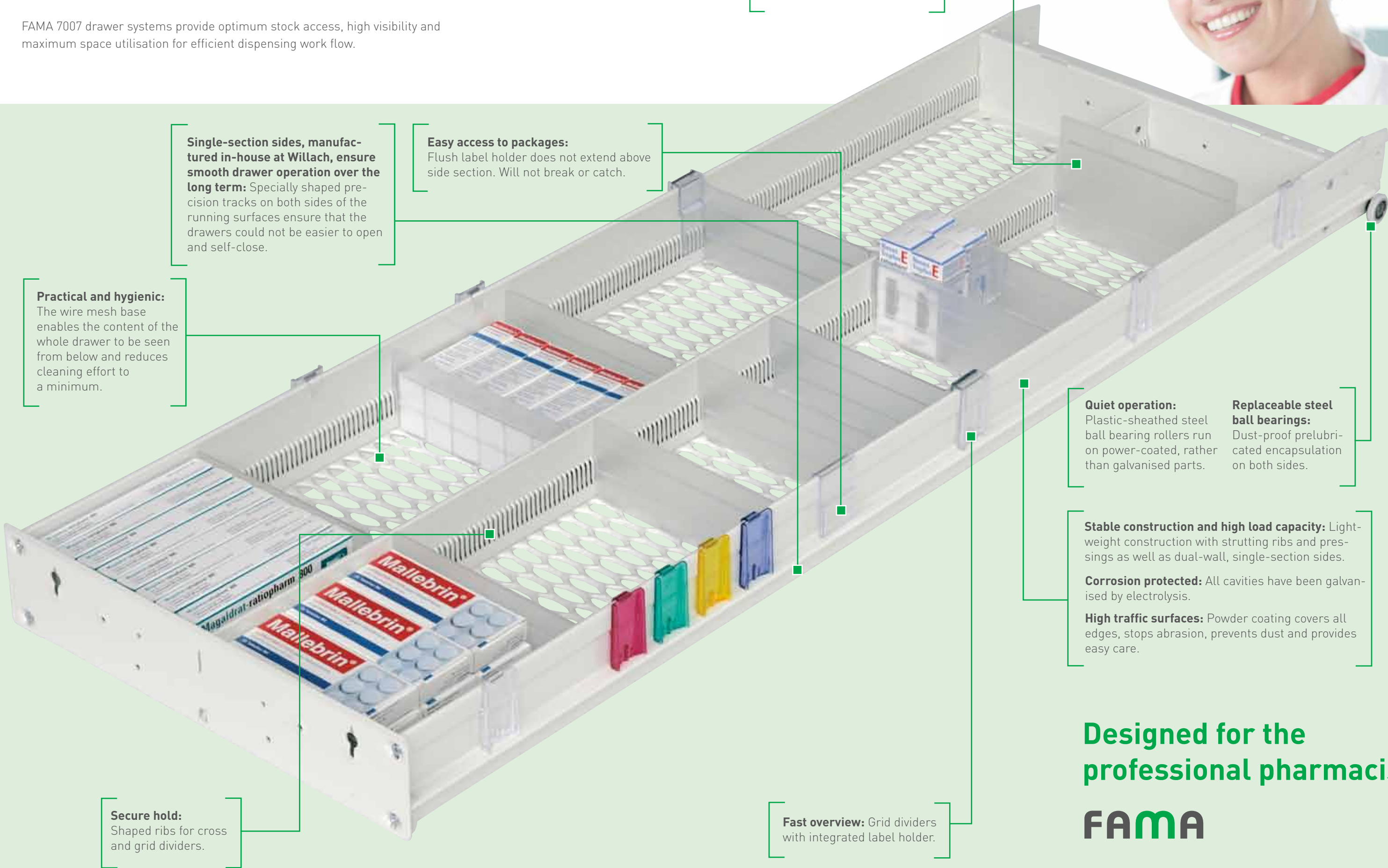
■ Inventory control

Products are highly visible, reducing the risk of stock management issues.



Efficient storage: Stock management at the finest level of detail!

FAMA 7007 drawer systems provide optimum stock access, high visibility and maximum space utilisation for efficient dispensing work flow.



Optimum adjustment for different package sizes:
Cross dividers in heights of 70, 105 and 140 mm.

Single-section sides, manufactured in-house at Willach, ensure smooth drawer operation over the long term: Specially shaped precision tracks on both sides of the running surfaces ensure that the drawers could not be easier to open and self-close.

Easy access to packages:
Flush label holder does not extend above side section. Will not break or catch.

Practical and hygienic:
The wire mesh base enables the content of the whole drawer to be seen from below and reduces cleaning effort to a minimum.

Quiet operation:
Plastic-sheathed steel ball bearing rollers run on power-coated, rather than galvanised parts.

Replaceable steel ball bearings:
Dust-proof prelubricated encapsulation on both sides.

Stable construction and high load capacity: Lightweight construction with strutting ribs and pressings as well as dual-wall, single-section sides.

Corrosion protected: All cavities have been galvanised by electrolysis.

High traffic surfaces: Powder coating covers all edges, stops abrasion, prevents dust and provides easy care.

Secure hold:
Shaped ribs for cross and grid dividers.

Fast overview: Grid dividers with integrated label holder.

Designed for the
professional pharmacist

FAMA

Features and benefits



Easy-find product system



Lightweight drawer system



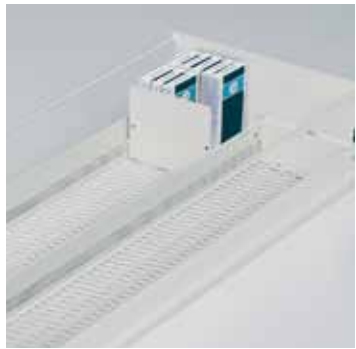
FAMA high-load carriage step (150 kg) = simple and safe access to upper drawers



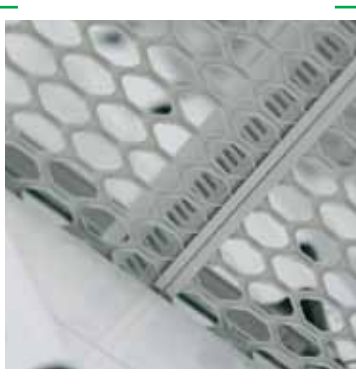
Suggested drawer work flow pattern



Bulk item double-height drawer



High visibility via wire mesh bases



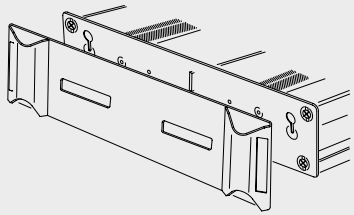
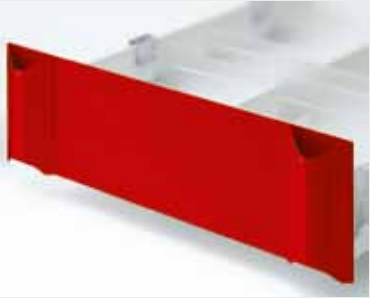
Precision drawer front alignment across all bays



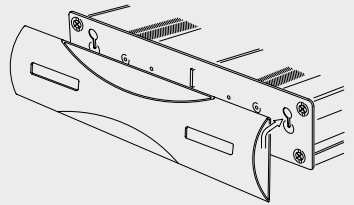
Individual look in shape and colour

It's your choice: there are two different designs and 28 colours for FAMA Vision fronts. They are simple and cost-effective to fit by clipping on. A clean joint pattern is guaranteed.

Fama Vision 1



Fama Vision 2



One system for the entire pharmacy



for storage of packages in full-height bays



Standard



Willach White (R9002)



Signal white (R9003)

Standard Plus



Willach Silver grey metallic (R9007)

Special colours



Ivory (R1014)



Zinc yellow (R1018)



Melon yellow (R1028)



Pastel yellow (R1034)



Pastel orange (R2003)



Carmine red (R3002)



Ruby red (R3003)



Rose (R3017)



Traffic red (R3020)



Salmon pink (R3022)



Claret violet (R4004)



Signal blue (R5005)



Cobalt blue (R5013)



Pastel blue (R5024)



Yellow green (R6018)



Pastel green (R6019)



Signal green (R6032)



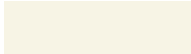
Nut brown (R8011)



Window grey (R7040)



Blue grey (R7031)



Cream (R9001)



Pure white (R9010)



White aluminium (R9006)



Anthracite (W0001)



Anthracite grey (R7016)

for underbench and script waiting areas





Willach – Experts in dispensing solutions